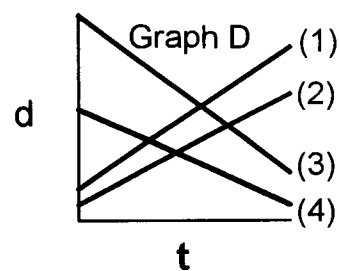
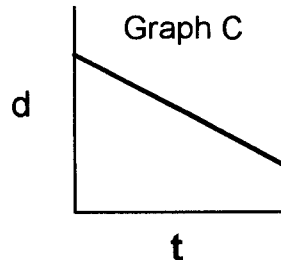
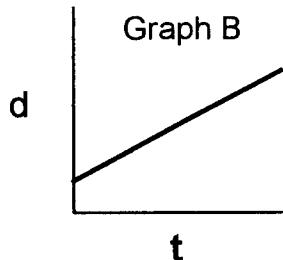
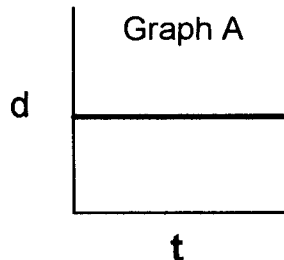


Darken in the correct answer(s) after each question.



1. Which graph represent a student walking at constant speed away from the motion sensor? (A) (B) ☒ (C)
2. Which graph represents a student standing still? ☒ (A) (B) (C)
3. Which graph represent a student walking at constant speed toward the motion sensor. ? (A) ☒ (C)
4. The following questions refer to Graph D.
 - a. Which line on graph D represents a person moving toward the detector with the lesser speed? ☒ (1) (2) (3) (4)
 - b. Which line on graph D represents a person moving away from the detector with the lesser speed? (1) (2) ☒ (3) (4)
 - c. Which line on graph D represents a person moving away from the detector with the greatest speed? (1) ☒ (2) (3) (4)
 - d. Which line on graph D represents a person moving toward the detector with the greatest speed? (1) (2) (3) ☒ (4)
5. What else can be determined from a distance vs time graph?

HOW SMOOTH THE WALK
 WHERE LOCATED
 DISTANCE TRAVELED
 WHERE STARTED